

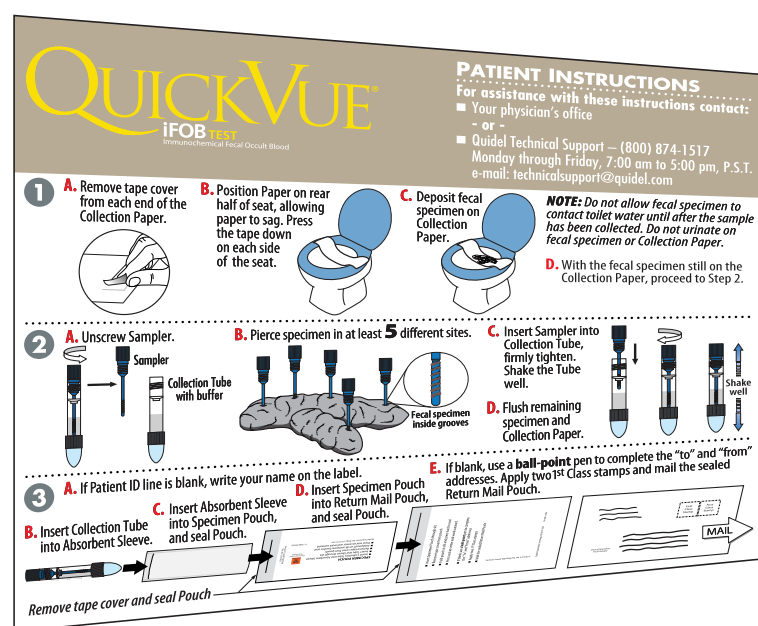
QUICKVUE[®]

iFOB TEST
Immunochemical Fecal Occult Blood

SPECIMEN COLLECTION AND RETURN KIT

COLLECTION KIT CONTENTS

Before using this kit, please make sure it contains all the necessary items

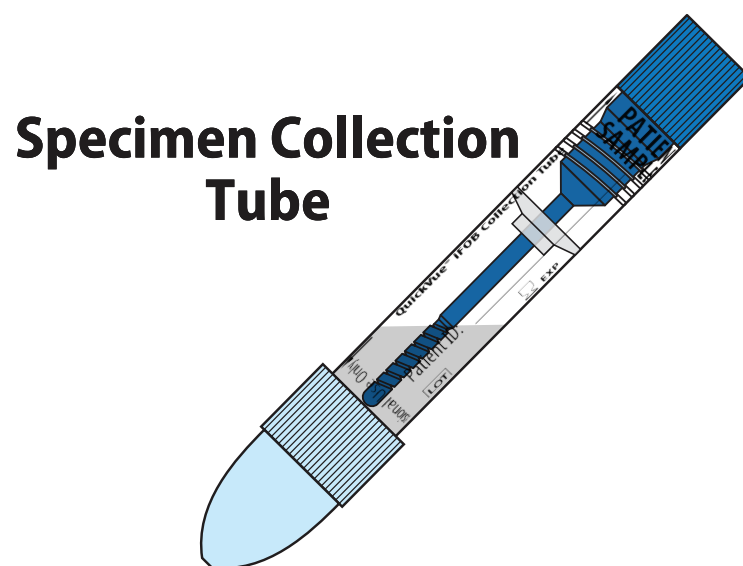
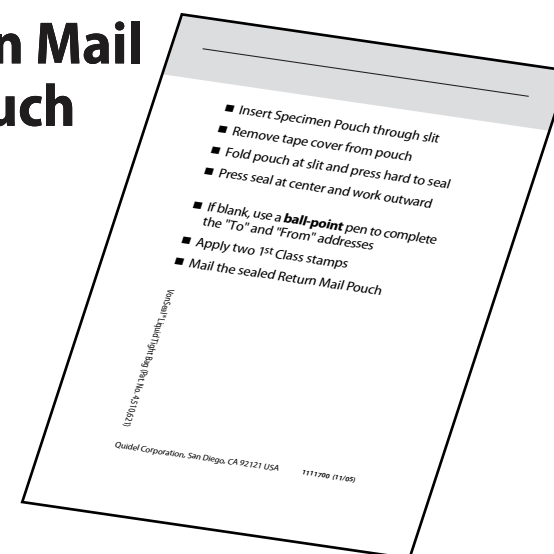


Patient Instructions

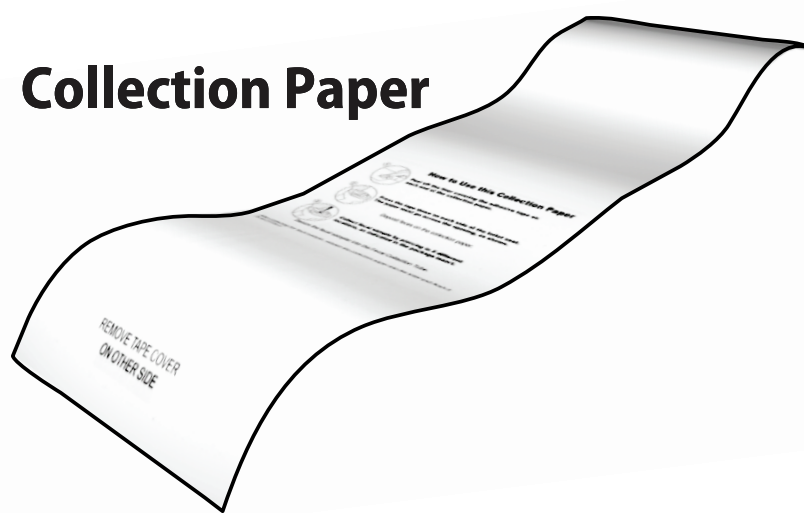


Specimen Pouch

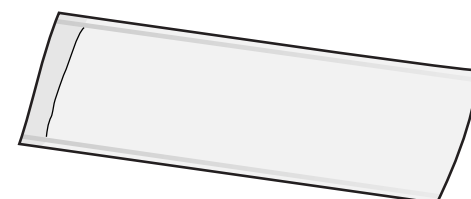
Return Mail Pouch



Specimen Collection Tube



Collection Paper



**Absorbent Sleeve
(save for mailing)**

QUICKVUE®

iFOB TEST
Immunochemical Fecal Occult Blood

PATIENT INSTRUCTIONS

For assistance with these instructions contact:

■ Your physician's office

- or -

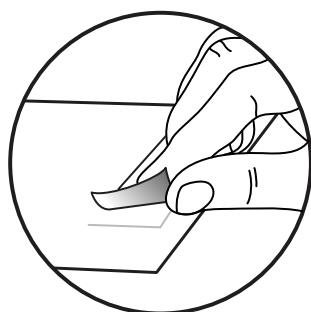
■ Quidel Technical Support — (800) 874-1517

Monday through Friday, 7:00 am to 5:00 pm, P.S.T.

e-mail: technicalsupport@quidel.com

1

A. Remove tape cover from each end of the Collection Paper.



B. Position Paper on rear half of seat, allowing paper to sag. Press the tape down on each side of the seat.



C. Deposit fecal specimen on Collection Paper.

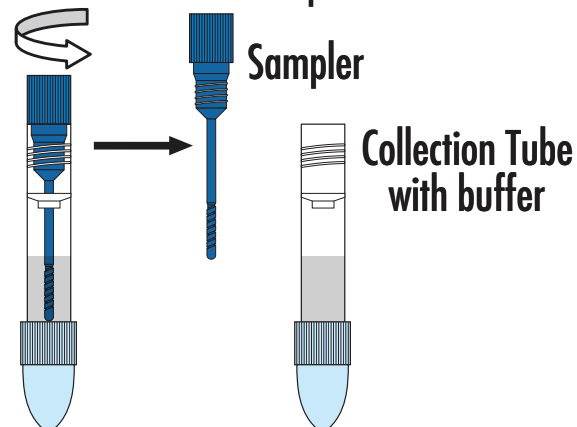


NOTE: Do not allow fecal specimen to contact toilet water until after the sample has been collected. Do not urinate on fecal specimen or Collection Paper.

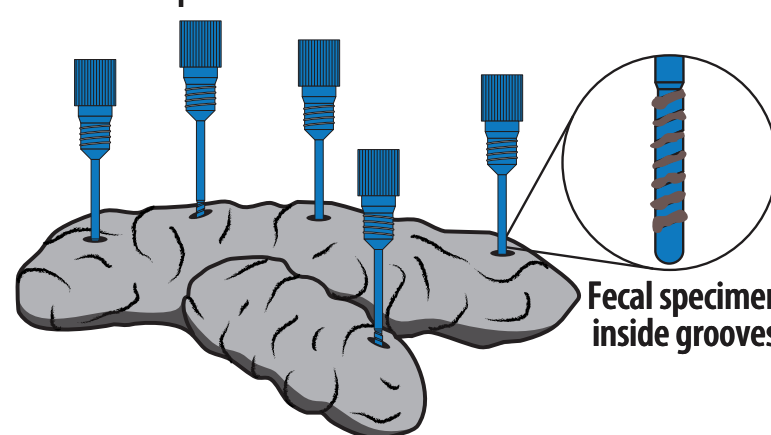
D. With the fecal specimen still on the Collection Paper, proceed to Step 2.

2

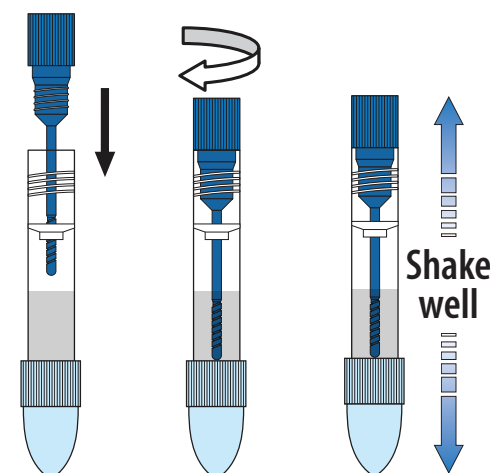
A. Unscrew Sampler.



B. Pierce specimen in at least **5** different sites.



C. Insert Sampler into Collection Tube, firmly tighten. Shake the Tube well.



D. Flush remaining specimen and Collection Paper.

3

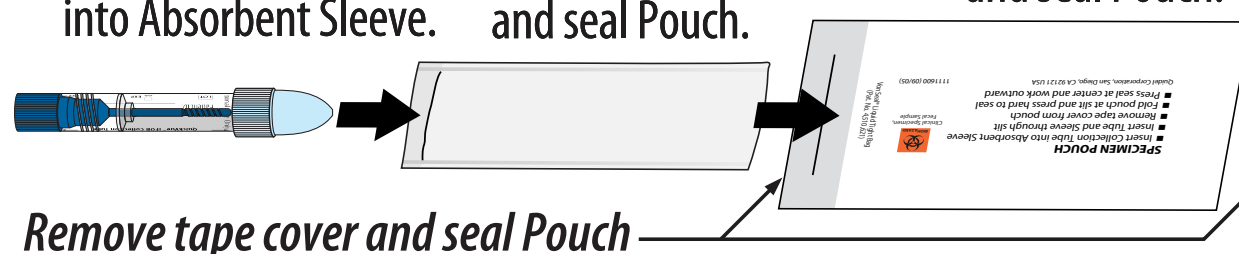
A. If Patient ID line is blank, write your name on the label.

B. Insert Collection Tube into Absorbent Sleeve.

C. Insert Absorbent Sleeve into Specimen Pouch, and seal Pouch.

D. Insert Specimen Pouch into Return Mail Pouch, and seal Pouch.

E. If blank, use a **ball-point** pen to complete the "to" and "from" addresses. Apply two 1st Class stamps and mail the sealed Return Mail Pouch.



Remove tape cover and seal Pouch

